



Mid-America Intercollegiate Athletics Association

The Mid-America Intercollegiate Athletics Association, a 10-member conference of NCAA Division II institutions in Missouri and Kansas, was first organized in 1912 as the Missouri Intercollegiate Athletic Association.

Over the past 20 years, the league has undergone several changes, highlighted by increased participation in national championships.

The MIAA has gained the reputation of being one of the top NCAA Division II conferences in the nation. MIAA student-athletes have won 13 national team championships and more than 140 individual national titles.

The MIAA currently conducts conference championships in eight men's and eight women's sports. Men's champion-

ships include football, cross country, basketball, indoor and outdoor track and field, baseball, tennis, and golf. Women's champions are determined in volleyball, soccer, cross country, basketball, indoor and outdoor track and field, softball and tennis.

Ralph McFillen, formerly of the Metro and Gulf South conferences, succeeded Ken B. Jones as commissioner of the MIAA in July 1997. Matt Newbery, previously the assistant sports information director at Pittsburg State University, is assistant to the commissioner for media relations and in his 13th year with the MIAA. Natasha Oakes, a former All-MIAA track performer at Emporia State University, was added as the third full-time staffer in July 2005 as assistant to the commissioner for compli-

MIAA Officers



President
Brenda Blessing
MWSU



Vice President
Kathy Anderson
CMSU



**Secretary/
Treasurer**
Jerry Wollmering
TSU

MIAA Appearances in NCAA Postseason

Football

- Central Missouri State: 2002
- Emporia State: 2003
- Missouri Southern: 1993
- Northwest Missouri State: 1984, 1989, 1996-2000, 2002, 2004-05.
- 1998-99 NCAA-II National Champions
- Pittsburg State: 1989-97, 1999-2001, 2003-05.
- 1991 NCAA-II National Champion
- Truman: 1982, 1990, 1992, 1994
- Washburn: 2005

Volleyball

- Central Missouri State: 1983-2005
- Emporia State: 2005
- Missouri-St. Louis: 1991, 1995
- Missouri Western: 1995, 2000
- Pittsburg State: 2003-04
- Southeast Missouri State: 1990
- Truman: 1994, 2000-05
- Washburn: 2002, 2004-05

Women's Soccer

- Southwest Baptist: 2004
- Truman: 1997, 2001-04

MIAA Members

School	Joined MIAA
Central Missouri State University	1912
Emporia State University	1991
Fort Hays State University	2006
Missouri Southern State University	1989
Missouri Western State University	1989
Northwest Missouri State University	1912
Pittsburg State University	1989
Southwest Baptist University	1986
Truman State University	1912
Washburn University	1989

MIAA Historical Timeline

- 1912:** The original Missouri Intercollegiate Athletic Association is formed — Cape Girardeau State Teachers, Kirksville State Teachers, Maryville State Teachers, Springfield State Teachers, Warrensburg State Teachers, Central Coll., Central Wesleyan, Culver-Stockton, Drury, Missouri Valley, Missouri Wesleyan, Tarkio, Westminster, and William Jewell.
- 1924:** The MIAA reorganized to include only the five regional state colleges — Central, Northwest, Northeast, Southwest & Southeast. Sports sponsored include football, basketball & outdoor track and field.
- 1931:** Tennis added as a conference sport.
- 1932:** Indoor track added as an MIAA sport.
- 1934:** Golf added as a conference sport.
- 1935:** Missouri School of Mines (now Missouri-Rolla) joins the MIAA.
- 1957:** MIAA joins the National Collegiate Athletic Association (NCAA) College Division.
- 1958:** Cross country added as an MIAA sport.
- 1965:** Wrestling and swimming added as MIAA sports.
- 1966:** Baseball added as an MIAA sport.

- 1970:** Lincoln University joins the MIAA.
- 1980:** University of Missouri-St. Louis joins the MIAA.
- 1981:** Ken B. Jones is appointed as MIAA's first full-time commissioner. Southwest Missouri State (now Missouri State) leaves for NCAA Division I. Men's soccer added as a conference sport. Swimming championship discontinued.
- 1982:** The MIAA begins sponsoring championships in women's athletics — volleyball, softball, basketball, cross country, track & field and tennis.
- 1986:** Southwest Baptist University joins the MIAA. Wrestling championship discontinued.
- 1989:** Missouri Southern, Missouri Western, Pittsburg State and Washburn join MIAA in conference's largest expansion. Men's soccer championship suspended.
- 1991:** Southeast Missouri State leaves for NCAA Division I, Emporia State joins the MIAA.
- 1992:** Name changed to Mid-America Intercollegiate Athletics Association, to better reflect the geography of membership. MIAA acronym maintained.
- 1994:** Men's soccer championship play resumes.

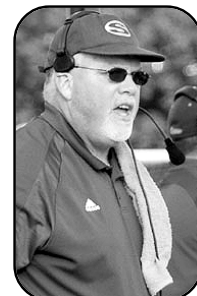
- 1996:** Missouri-St. Louis completes final MIAA season. Northeast Missouri State changes its name to Truman State University.
- 1997:** Ken Jones retires as MIAA commissioner and is succeeded by Ralph McFillen. MIAA Office moves from Maryville, Mo., to Overland Park, Kan.
- 1999:** Lincoln forfeits membership in the MIAA at conclusion of 1998-99 academic year. Men's soccer championship discontinued. Women's soccer added as a conference sport.
- 2000:** The MIAA enters agreement with Mineral Water Bowl, where the top team from the conference not making the NCAA-II Football Playoffs will take on a representative from the Northern Sun Intercollegiate Conference the first Saturday in December. The MIAA announces plans to bring men's and women's basketball postseason tournaments to Kansas City.
- 2002:** On Oct. 17, 26,695 football fans at Kansas City's Arrowhead Stadium watch Northwest Missouri State defeat Pittsburg State, 29-6. It is the largest crowd ever to witness an MIAA event.
- 2005:** Missouri-Rolla completes final MIAA season, to be replaced by Fort Hays State in 2006-07.

Table of Contents



MIAA General Information	Inside Front Cover	2005 Cross Country Award Winners	58
MIAA Media Quick Reference	1	2005 MIAA Cross Country Academic Awards	58
2006 Composite Football Schedule	2	Past MIAA Cross Country Champions	59
2006 MIAA Football Preview	3	2006 Composite Women's Soccer Schedule	60
2006 Football	4-12	2006 MIAA Women's Soccer Preview	61
Central Missouri State University	4	2006 Women's Soccer	62-66
Emporia State University	5	Central Missouri State/Emporia State	62
Fort Hays State University	6	Missouri Southern/Missouri Western	63
Missouri Southern State University	7	Northwest Mo. St./Southwest Baptist	64
Missouri Western State University	8	Truman/Washburn	65
Northwest Missouri State University	9	2005 Final MIAA Women's Soccer Statistics	66
Pittsburg State University	10	2005 All-MIAA Women's Soccer Team	66
Southwest Baptist University	11	2005 Women's Soccer Award Winners	67
Truman State University	12	MIAA Women's Soccer Records	68-69
Washburn University	13	Yearly MIAA Women's Soccer Standings/ Past Champions & Award Winners	69
2005 Final MIAA Football Statistics	14-17	MIAA Staff	70
2005 All-MIAA Football Team	17	Ken B. Jones Award	71
2005 Football Award Winners	18	MIAA Member Information	72-Inside Back Cover
2005 MIAA Football Academic Awards	19		
MIAA Regular Season Football Records	20-24		
Past MIAA Football Award Winners	24		
Annual MIAA Football Leaders	25		
Yearly MIAA Football Standings	26-28		
Past MIAA Football Champions	28		
Past All-MIAA Football First-Teams	29-31		
The MIAA in Professional Football	32-33		
MIAA Professional Football Draft History	34-35		
The MIAA's Harlon Hill Award Winners	36		
Mineral Water Bowl	37		
2006 Composite Volleyball Schedule	38		
2006 MIAA Volleyball Preview	39		
2006 Volleyball	40-44		
Central Missouri State/Emporia State	40		
Fort Hays State/Missouri Southern	41		
Missouri Western/Northwest Missouri St.	42		
Pittsburg State/Southwest Baptist	43		
Truman/Washburn	44		
2005 Final MIAA Volleyball Statistics	45-46		
2005 All-MIAA Volleyball Team	47		
2005 Volleyball Award Winners	47		
2005 MIAA Volleyball Academic Awards	48		
Past MIAA Volleyball Champions	48		
Past MIAA Volleyball Award Winners	49		
Annual MIAA Volleyball Leaders	49		
MIAA Volleyball Records	50		
Yearly MIAA Volleyball Standings since 1993	51		
Past All-MIAA Volleyball First-Teams	51		
2006 Composite Cross Country Schedule	52		
2006 MIAA Cross Country Coaches Polls	52		
2006 Cross Country	53-56		
Central Missouri State/Emporia State	53		
Fort Hays State/Missouri Southern	54		
Northwest Missouri State/Pittsburg State	55		
Southwest Baptist/Truman	56		
2005 MIAA Cross Country Championships	57		
2005 NCAA Division II Postseason Results	57		

The 2006 MIAA Fall Sports Guide is a publication of the Mid-America Intercollegiate Athletics Association's Office of Sports Information. The book was designed and edited by Matt Newbery using an iMac with Adobe PageMaker 6.5 and Adobe Photoshop 5.0 software. Special thanks to the MIAA sports information offices for their invaluable assistance, as well as Natasha Oakes and former interns John Gagnon, Jennifer Foltz, Kim Redmon and Kandice Connell for their past work on this book. Printed by Capital Graphics, Topeka, Kan.



**In Memoriam
John Ware
1959-2005**

Coach John Ware died Sept. 27, 2005 during his second season as MSSU's head football coach. He spent the 19 preceding years at Truman, the last nine as head coach.

MIAA Media Quick Reference



Newspapers

MIAA: Kansas City Star (AM); Mike Fannin (SE), Derek Samson (ASE) – Colleges, David Boyce (Beat); (816) 234-4355; Fax (816) 234-4360.
CMSU: Warrensburg Daily Star-Journal (PM); Greg Neunuebel (SE); (660) 747-8123; Fax (660) 747-8741. Sedalia Democrat (AM); Kyle Smith (SE); (660) 826-1000; Fax (660) 826-0400.
ESU: Emporia Gazette (PM); TBA (SE); (620) 342-4805; Fax (620) 342-8108.
FHSU: Hays Daily News (PM); Randy Gonzalez (SE), Nick McQueen (Writer), Nabil Shaheen (Writer); (785) 628-1081 or (800) 657-6017. Fax (785) 628-8186.
MSSU: Joplin Globe (AM); Jim Fryar (SE); (417) 623-3480, x7810 or (800) 444-8514; Fax (417) 623-8598. Neosho Daily News (PM); Cody Thorn (SE); (417) 451-1520; Fax (417) 451-6408. Carthage Press (PM), Jacob Brower (SE); (417) 358-2191; Fax (417) 358-7428.
MWSU: St. Joseph News-Press (AM); TBA (SE), Rick Dunaway (Beat); (816) 271-8553; Fax (816) 271-8692.
NWMSU: Maryville Daily Forum (PM); Charlie Slenker (SE); (660) 562-2424; Fax: (660) 562-2823. St. Joseph News-Press (AM); TBA (SE), Eddie Burns (Beat); (816) 271-8555; Fax (816) 271-8692.
PSU: Pittsburg Morning Sun (AM); Bill McMullen (SE); Jim Henry (Beat); (620) 231-2600; Fax (620) 231-0645.
SBU: Bolivar Herald-Free Press (Weekly); Bill Breshears (SE); (417) 326-7636; Fax (417) 326-7643. Springfield News-Leader (AM); Joe Cress (Beat) (417) 836-1118; Fax (417) 837-1381.
TSU: Kirksville Daily Express (PM); Bud Schrader (co-SE); Jason Hunsicker (co-SE) (660) 665-2808; Fax: (660) 665-2608.
WU: Topeka Capital-Journal (AM); Kurt Caywood (SE), Ken Corbett (Beat); (785) 295-1188 or (800) 777-7171. Fax (785) 295-1230.

Play-By-Play Radio

CMSU: Central Sports Network; Shawn Jones (Dir.) (660) 543-8091; Fax: (660) 543-8034; Affiliates –KOKO (1450 AM), KWJK (98.5 FM), KTBG-FM (90.9 FM).
ESU: KFFX (104.9 FM); Greg Rahe (SD); (620) 342-1400; Fax: (620) 342-0804.
FHSU: KJLS (103.3 FM); Gerald Wellbrock (SD); (785) 625-2578; Fax: (785) 628-1822.
MSSU: KHST (101.7 FM); Kevin Greim (Play-by-Play); (417) 625-3075; Fax: (417) 625-9397.
MWSU: KFEQ (680 AM); Bob Orf (Play-by-Play); (816) 364-6397; Fax: (816) 364-6856.
NWMSU: Bearcat Radio Network; John Coffey (Dir.); (660) 562-1163; Fax: (660) 562-1900. Affiliates –KXCV (90.5 FM), KNIM (1580 AM/97.1 FM), KRNW (87.9 FM), KCXL (1140 AM), KAAN (95.5 FM), KSFT (1550 AM).
PSU: KKOW (860 AM/96.9 FM)/KBZI (100.7 FM); Eddie Lomshek (SD); (620) 231-7200; Fax: (620) 231-3321.
SBU: KBFL (99.7 FM); Rob Evans (SD) (417) 345-2412; Fax: (417) 345-2410.
TSU: KRES/KIRK (104.7 FM/99.9 FM); Brad Boyer (SD); (800) 892-2300; Fax: (660) 269-8811. KTRM (88.7 FM); (660) 785-4506.
WU: WIBW (580 AM); Bruce Steinbrock (SD); (785) 272-3456; Fax (785) 272-2633; Affiliates – KTPK (106.9 FM).

Television

MIAA/CMSU: KMBC (Ch. 9/ABC) John Crumley (SP); (816) 221-1821; Fax (816) 421-4163. KSHB (Ch. 41/NBC); Jack Harry (SD); (816) 932-4142; Fax (816) 932-4349. Metro Sports/KCTV (Ch. 5/CBS); John Sprugel (SP) (816) 358-5360; Fax (816) 358-5479. WDAF (Ch. 4/Fox); Frank Boal (SD); (816) 932-9212; Fax (816) 932-9202.
ESU/WU: KSNT (Ch. 27/NBC); Johnny Kane (SD); (785) 582-3222; Fax: (785) 582-5283. KTKA (Ch. 49/ABC); Nick Griffith (SD); (785) 215-8503; Fax (785) 215-8495. WIBW (Ch. 13/CBS); Mark Ewing (SD); (785) 272-3376; Fax: (785) 271-0418.
FHSU: KBSH (Ch. 10/CBS); Gerald Wellbrock (Reporter); (785) 625-5277; Fax (785) 625-1161.
MSSU/PSU: KOAM (Ch. 7/CBS)/KJFX (Ch. 14/Fox); Chad Plein (SD); (620) 231-0400 or (417) 624-0233; Fax: (417) 624-3158. KODE (Ch. 12/ABC); Brett Newton (SD); (417) 623-7260; Fax: (417) 623-3736. KSNN (Ch. 16/NBC); Eric Knecht (SD); (417) 781-2345; Fax: (417) 781-9249.
MWSU/NWMSU: KQTV (Ch. 2/ABC); Ryan Menley (SD); (816) 233-1606; Fax: (816) 232-7505.
SBU: KOLR (Ch. 10/CBS)/KDEB (Ch. 27/Fox); Dan Lucy (SD); (417) 862-6397; Fax: (417) 866-6397. KSPR (Ch. 33); Daniel Holdge (SD); (417) 831-1234; Fax: (417) 831-9358. KYTV (Ch. 3/NBC); Ned Reynolds (SD); (417) 268-3220; Fax: (417) 268-3364.
TSU: KTVO (Ch. 3/ABC); Fred Beck (SD); (660) 627-3333; Fax: (660) 627-1885. KHQA (Ch. 7/CBS); Chris Duerr (SD); (217) 222-6206; Fax: (217) 222-5078. WGEM (Ch. 10/CBS); Ben Marth (SD); (800) 728-6600; Fax: (217) 224-5786.



2006 Composite Football Schedule

Thursday, August 24

TSU @ Minnesota State-Mankato 6:30 p.m.

Thursday, August 31

Harding (Ark.) @ SBU 6 p.m.

MWSU @ Central Oklahoma 7 p.m.

Saturday, September 2

Colorado Mines @ WU 1 p.m.

ESU @ Oklahoma Panhandle State 1 p.m.

Minnesota State-Mankato @ NWMSU 1 p.m.

TSU @ Winona (Minn.) State 1 p.m.

CMSU @ Lincoln (Mo.) 2 p.m.

Ouachita Baptist (Ark.) @ MSSU 6 p.m.

PSU @ East Central (Okla.) 6 p.m.

Texas A&M-Commerce @ FHSU 7 p.m.

Saturday, September 9

FHSU @ Colorado Mines 1 p.m.

Nebraska-Omaha @ NWMSU 1 p.m.

Winona (Minn.) State @ ESU 1 p.m.

WU @ Western Washington 3 p.m.

Dakota (S.D.) State @ CMSU 6 p.m.

MSSU @ Harding (Ark.) 6 p.m.

SBU @ Missouri State 6 p.m.

St. Cloud (Minn.) State @ MWSU 6 p.m.

Oklahoma Panhandle State @ PSU 7 p.m.

Saturday, September 16

*NWMSU @ TSU 12 noon

*FHSU @ ESU 1 p.m.

*WU @ CMSU 1:30 p.m.

*PSU @ MWSU 6 p.m.

*SBU @ MSSU 6 p.m.

Saturday, September 23

*MWSU @ NWMSU 1 p.m.

*CMSU @ TSU 2 p.m.

*MSSU @ PSU 2 p.m.

*ESU @ SBU 6 p.m.

*WU @ FHSU 7 p.m.

Saturday, September 30

*PSU @ ESU 1 p.m.

*SBU @ WU 1 p.m.

*CMSU @ FHSU (HC) 2 p.m.

*TSU @ MWSU 2 p.m.

*NWMSU @ MSSU 6 p.m.

Saturday, October 7

*ESU @ NWMSU 1 p.m.

*MWSU @ CMSU 1:30 p.m.

*FHSU @ SBU (HC) 2 p.m.

*MSSU @ TSU 2 p.m.

*WU @ PSU 2 p.m.

Saturday, October 14

*NWMSU @ WU 1 p.m.

*TSU @ ESU (HC) 1 p.m.

*SBU @ CMSU (HC) 1:30 p.m.

*MWSU @ MSSU (HC) 2 p.m.

*PSU @ FHSU 7 p.m.

Saturday, October 21

*FHSU @ NWMSU (HC) 1:30 p.m.

*CMSU @ MSSU 2 p.m.

*ESU @ MWSU (HC) 2 p.m.

*SBU @ PSU (HC) 2 p.m.

*WU @ TSU (HC) 2 p.m.

Saturday, October 28

*ESU @ WU (HC) 1 p.m.

*MWSU @ SBU 1:30 p.m.

*NWMSU @ CMSU 1:30 p.m.

*MSSU @ FHSU 2 p.m.

*TSU @ PSU 2 p.m.

Saturday, November 4

*SBU @ TSU 12 noon

*ESU @ CMSU 1:30 p.m.

*FHSU @ MWSU 2 p.m.

*PSU vs. NWMSU

@ The Fall Classic at Arrowhead V, Kansas City, Mo. 2 p.m.

*WU @ MSSU 2 p.m.

Saturday, November 11

*MSSU @ ESU 1 p.m.

*MWSU @ WU 1 p.m.

*NWMSU @ SBU 1:30 p.m.

*CMSU @ PSU 2 p.m.

*TSU @ FHSU 2 p.m.

Saturday, November 18

NCAA Division II Playoffs – First Round @ campus sites

Saturday, November 25

NCAA Division II Playoffs –Second Round @ campus sites

Saturday, December 2

NCAA Division II Playoffs –Quarterfinals @ campus sites

Mineral Water Bowl –MIAA vs. NSIC @ Excelsior Springs, Mo. 1 p.m.

Saturday, December 9

NCAA Division II Playoffs –Semifinals @ campus sites

Saturday, December 16

NCAA Division II Championship Game @ Florence, Ala.

Legend: CMSU=Central Missouri State University; ESU=Emporia State University; FHSU=Fort Hays State University; MSSU=Missouri Southern State University; MWSU=Missouri Western State University; NWMSU=Northwest Missouri State University; PSU=Pittsburg State University; SBU=Southwest Baptist University; TSU=Truman State University; WU=Washburn University

*= MIAA Game. HC=Homecoming Game. Schedule as of July 19, 2006. All times are Central Daylight/Standard. Dates and times are subject to change.

2006 Football Preview

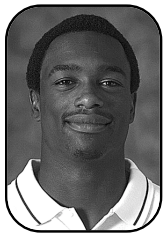


Change was all around MIAA football last season, with one school leaving and a first-time champion being crowned.

That theme continues in 2006, with the conference adding a new member for the first time in 15 years and two more league schools going to artificial turf, but will this carry over again to the league standings?

The coaches believe that **Northwest Missouri State** (11-4, 6-2 MIAA) will be able to parlay an appearance in the 2005 NCAA Division II Championship Game into a return to the top spot in the MIAA.

The Bearcats must find a replacement for Josh Lamberson at quarterback – sophomore Joel Osborn (4-3-0, 58 yds. 1 TD) hung up his basketball hightops to concentrate on the battle in spring drills with junior Josh Mathews (16-9-0, 77 yds. 0 TDs) for the job. Meanwhile, head coach Mel Tjeerdsma will be calling the offensive signals himself this season for the first time in his tenure at Northwest.



Xavier Omon
NWMSU

Among the five starters back on offense are junior RB Xavier Omon (117.4 ypg rushing, 14 TDs) and junior TE Mike Peterson (47.2 ypg receiving, 6 TDs), along with a trio of offensive linemen.

The defense has eight starters back, but many of them missed spring practice with injuries – the reps earned by the reserves should help Northwest's depth when the inevitable aches and pains strike during the season.

On the topic of aches and pains, the **Pittsburg State** Gorillas (10-4, 6-2 MIAA) hope the hamstring issues suffered through by senior RB Germaine Race (142.0 ypg rushing, 33 TDs) in the last four weeks of play in 2005 are in the past.

Like Northwest, the Gorillas will have a new man in the pivot – the only candidate with game experience at PSU is sophomore QB Mark Smith (8-7-0, 76 yds., 0 TDs). Besides Race, six starters return on offense – including four linemen.

Senior DE Ryan Meredith (4.9 tpg, 9.5 QBS, 15 TFLs) leads five defensive starters back for the Gorillas. PSU has brought in a number of transfers to bolster the defense, led by junior CB Justin Dore and sophomore DT Reggie Young.

The defending MIAA champion Ichabods of **Washburn** (9-3, 7-1 MIAA) became the first team other than Northwest or PSU to win an outright MIAA title since 1993, and did so by knocking off those squads on successive weeks.

WU has its options on offense returning – junior QB Jordan Brill (231.2 ypg passing, 24 TDs) has senior RB Trent Hearn (100.2 ypg rushing, 20 TDs) to hand off to or he can pass to senior WR Sam Sissom (115.5 ypg rec., 3 TDs in 2 gms), who is back after getting a medical hardship waiver.

Senior CB Fletcher Terrell (8 INTs, 2 TDs) is back to lead what will be a defensive backfield lacking starting experience. Three of the five returning defensive starters are linemen who combined for 14 of WU's 31 sacks last season.

The **Central Missouri State** Mules (7-3, 5-3 MIAA)

2006 MIAA Football Preseason Coaches Poll

School	Pts
1. Northwest Missouri State (5)	75
2. Pittsburg State (1)	68
3. Washburn (1)	63
4. Central Missouri State (2)	60
5. Missouri Western (1)	57
6. Emporia State	42
7. Missouri Southern	33
8. Truman	20
9. Fort Hays State	19
10. Southwest Baptist	13

Points awarded on an 9-8-7-6-5-4-3-2-1 basis.
Coaches could not vote for their own school.

finished the 2005 season with five wins in their last seven games (the two losses were by a combined 13 points) when senior QB Toby Korrodi (206.6 ypg, 23 TDs, 2 INTs) had secured the starting quarterback position.

He and senior RB Will Caldwell (97.1 ypg, 12 TDs) are back, but three offensive linemen (including All-America Daryl Grace) will need to be replaced, along with 49ers draft choice Delanie Walker at wide receiver.

Junior FS Kendall Ricketts (9.6 tpg, 7 PBU, 1 INT) was the leading tackler for the Mules last season – no other CMSU player was within 50 tackles of his total of 96. The Mules have seven other starters back on defense, but one key loss was sack leader Maurice White.

The **Missouri Western** Griffons (9-3, 6-2 MIAA) have been a regular player in the Mineral Water Bowl in recent seasons, but would be willing to break that habit if it meant an NCAA-II playoff berth.

With 16 starters back, including 10 on defense, Western could make a run for that elusive NCAA postseason spot. Much will depend on if sophomore returning OLs Roger Allen (Co-MIAA Freshman of the Year) and Patrick St. Louis can get some assistance.

The skilled positions are solid with senior QB Michael Burton (187.4 ypg, 18 TDs, 9 INTs), senior RB Jeremiah White (150.1 ypg rushing, 11 TDs), senior WR Jarrett Brooks (67.2 ypg rec., 8 TDs) and senior TE Gijon Robinson (38.9 ypg rec., 2 TDs).

The Griffons defense is highlighted by senior LB John Matthew Fisher (team-best 8.5 tpg, 5 QBS, 8 TFLs), senior LB Leon Douglas (7.1 tpg, 4 QBS, 7.5 TFLs) and senior DL Michael Cobbins (4.2 tpg, 5 QBS, 11.5 TFLs).

Emporia State (4-6, 3-5 MIAA) hopes a year of starting experience for the 14 returning starters (seven on each side of the ball) will help the Hornets improve on last year's record. Maybe a healthy season for sophomore RB Seville Ko (62.1 ypg, 6 TDs in 9 gms) will do so as well.

Senior QB Justin Whitworth (167.0 ypg, 13 TDs, 10 INTs) will have to find a new favorite target with J.J. Richard's departure, but senior WR Ryan Hulings (41.2 ypg, 1 TD) could be ready to step up.

Junior CB Emmanuel Howard (3 INTs) and senior LB Matt Demicoli (6.2 tpg, 7 TFLs) are among the returnees for ESU's defense.

Following the sudden death of head coach John Ware midway through last season, **Missouri Southern** (3-7, 2-6 MIAA) will attempt to carry forward with longtime Northwest assistant Bart Tatum taking over the Lions in 2006.

Sophomore QB Adam Hinspeter (249.2 ypg, 15 TDs, 11 INTs – Co-MIAA Freshman of the Year) is back to guide the offense, along with the Lions' leading pass catcher in senior Colin Bado (75.9 ypg rec., 5 TDs).

Senior FS Jordan Chapman (5.7 tpg, team-best 6 INTs) and junior DE B.J. Russow (4.0 tpg, 5.5 QBS, 12 TFL) highlight six starters back on the Southern defense.

It is time for the **Truman** Bulldogs to make their move up the league standings – especially with 17 starters back from last season.

Sophomore QB Michael Long (171.8 ypg passing, 9 TDs, 18 INTs) knows what the MIAA is about now after starting for most of 2005, and each of his leading pass catchers are back as well – senior WRs James Perry and Jeff Amundsen.

The defense lost its top tackler in Jason Douglas, but sophomore DL Andy Swedenhjelm opened eyes as a freshman. He'll be the only underclassman on the line. Senior Larry Giglio and senior DB Josh Mayson add to the senior-laden group of nine returning starters.

The new kids on the block, the **Fort Hays State** Tigers (2-8, 2-6 RMAC), enter their second season under head coach Kevin Verdugo. FHSU has 12 returning starters (six on each side of the ball) for 2006.

Junior RB Jordan Hickel (73.0 ypg rushing, 2.9 receptions pg, 3 Total TDs) returns to the backfield, but the quarterback spot is open with the departure of Reed Gottula. The Tigers will be out to improve their 13.7 points per game average from last season.

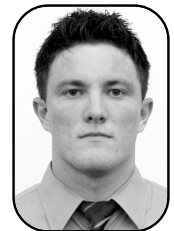
Hays lost four of its top five tacklers from last season, with only junior LB Zach Scruggs (6.5 tpg, 5 TFLs) back among them. Junior DL Jason Hill (4.6 tpg, 9 TFLs, 7 QBS) was busy in his seven games in 2005.

The roster for the **Southwest Baptist** Bearcats (3-8, 1-7 MIAA) has a lot of new faces in Jack Peavey's second season, as he made up for the late start he faced in recruiting for his initial campaign in Bolivar.

SBU does have nine returning starters on offense, with senior QB Robert Clardy (88.4 ypg rushing, 139.9 ypg passing, 25 TDs responsible) the catalyst. Senior RB Moine Nicholson (97.1 ypg rushing, 4 TDs in 8 gms) hopes to bounce back from a season-ending injury in 2005.

The secondary is nearly intact, including seniors DBs Clint King (6.1 tpg, 3 PBUs, 1 INT) and Everette Riley (5.1 tpg, 4 PBUs, 1 INT) – the top returning tacklers for the Bearcats.

The linebacker corps will need to be revamped with the departure of Joey Maiwelmal and Nathan Dunn.



Robert Clardy
SBU